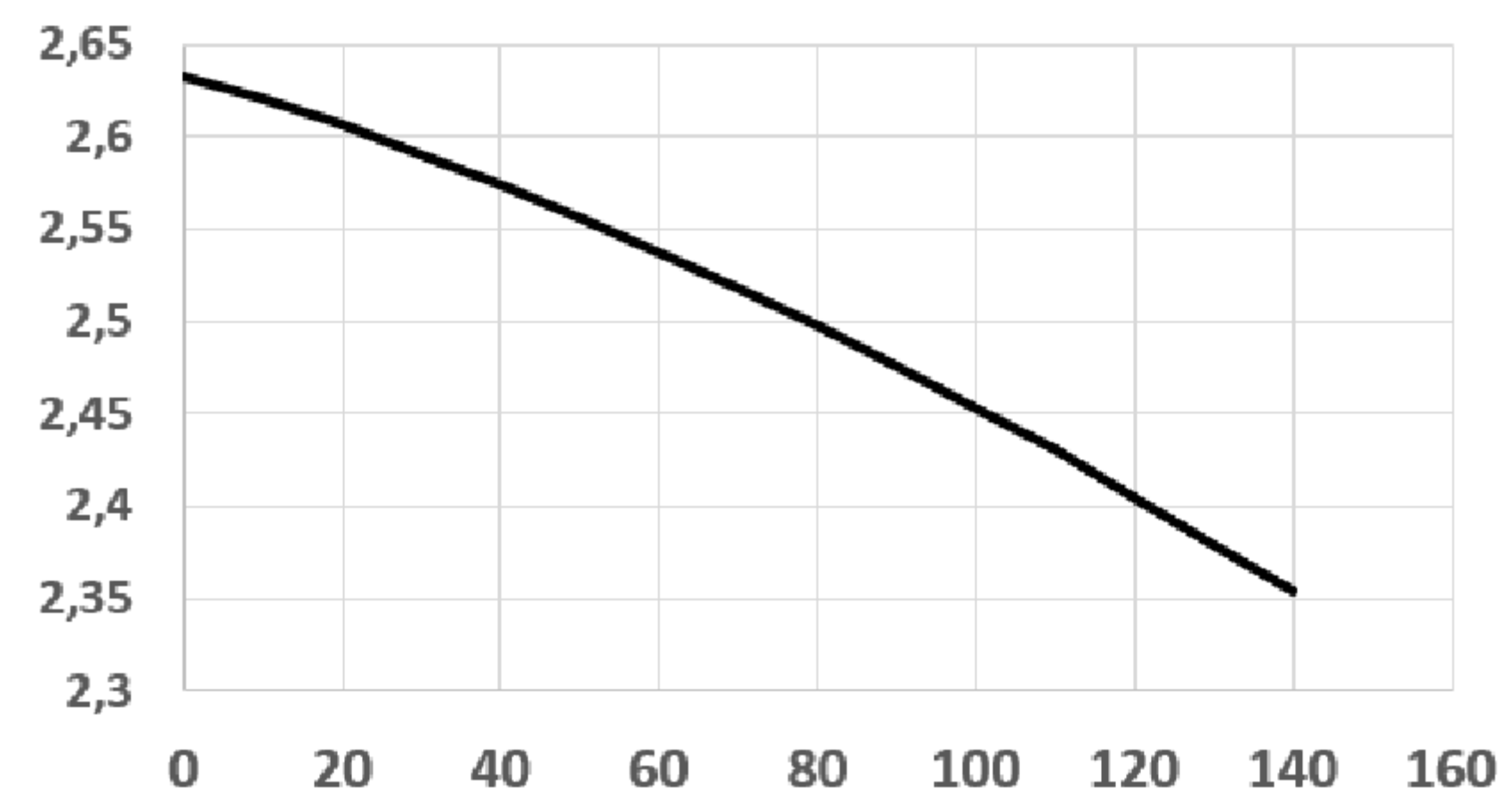
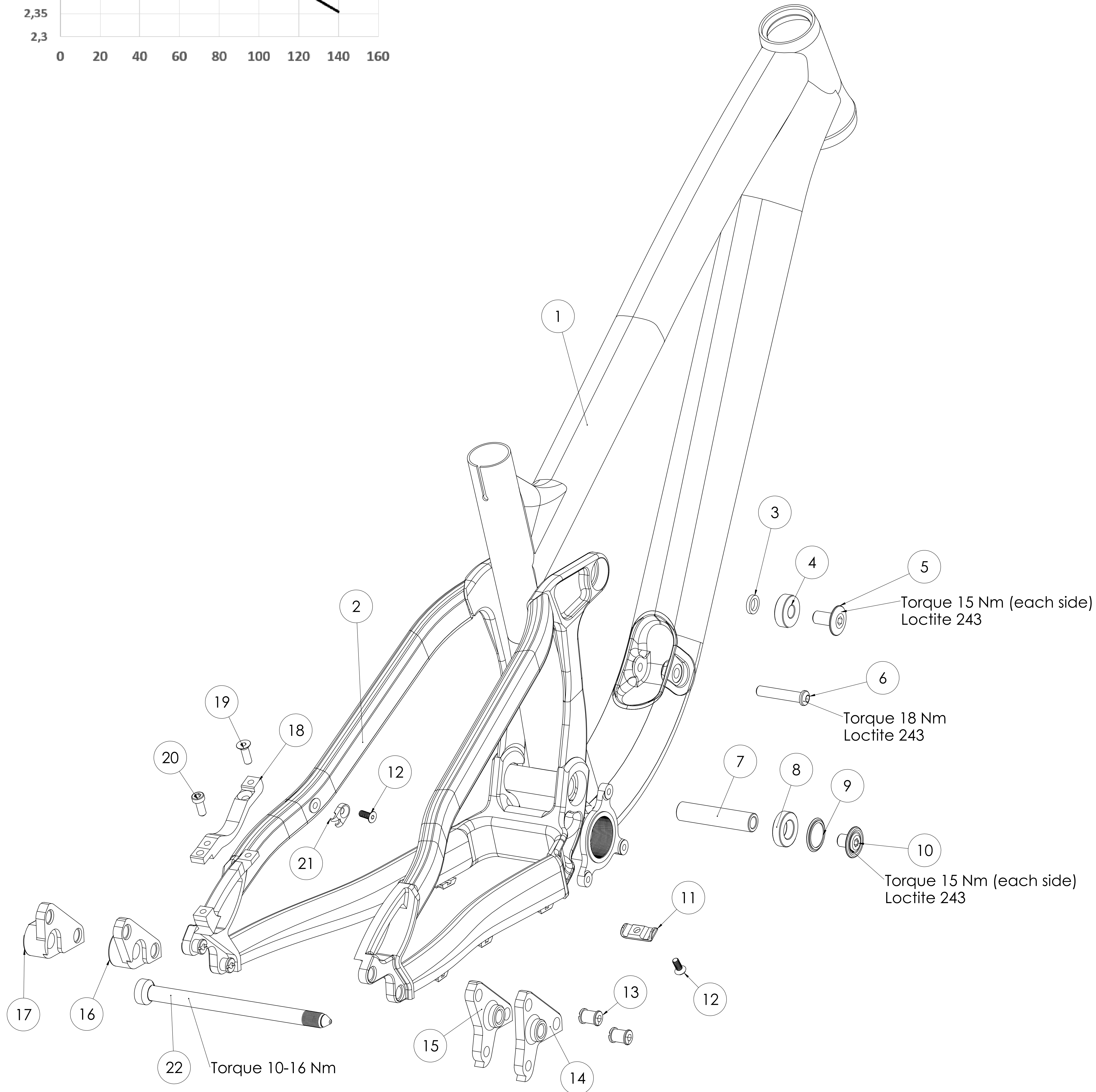


Suspension Leverage Ratio



PROPAIN



No	Propain part No	Description	QTY
1	000552-AA	Yuma_V2_frame_main	1
2	000542-AA	Rear_triangle	1
3	000576-AA	Washer_10x15x2.75	2
4	000565-AA	Bearing_10x26x8_6000-2RS	2
5	000569-AA	Bolt_M10x1xTrunion	2
6	000575-AA	Bolt_M8x42_custom	1
7	000748-AA	Axle_15dia_67.5mm_M10x1	1
8	000006-AA	Bearing_15x28x7	2
9	000602-AB	Dust_cap_seal	2
10	000600-AB	15mm_Axle_cap	2
11	000234-AA	Cable_guide_3_Yozu_13-024-00AB+	3
12	000056-AA	Bolt_M5x12_countersunk	5
13	000149-AA	Bolt_and_Nut_M8x0.75X12mm_Chainring_Style	4
14	000148-AA	PED_26_X12_right (dropout for 26" wheel)	1
15	000143-AA	PED_24_X12_right	1
16	000142-AA	PED_24_X12_left	1
17	000147-AA	PED_26_X12_left (dropout for 26" wheel)	1
18	000144-AA	PED_24_brake_adapter (do not use adapter with 26" dropouts)	1
19	000145-AA	Bolt_M6x18_countersunk	1
20	000146-AA	Bolt_M6x15_flat_head	1
21	000057-AA	Cable_guide_1	2
22	000041-AB	X12-axle_assembly_Syntace	1

Yuma V2 - Standards	
Shock length	185mm
Shock travel	55mm
Shock mount top	Trunion
Shock mount bottom	8mm x 25mm
Rear wheel travel	145mm
Bottom bracket	73mm BSA
Brake mount	Post mount 160mm
Seat post	31.6mm
Head Set (S.I.H.S.)	Top: IS42 / Bottom IS52
Rear wheel axle	X12 (boost)
rear hub width	148mm (boost)
Chain line	52mm (boost)
Chain guide mount	ISCG 05